

# Aqua Building

UNDER CONSTRUCTION



**Building Specifications**

**TOTAL AREA**

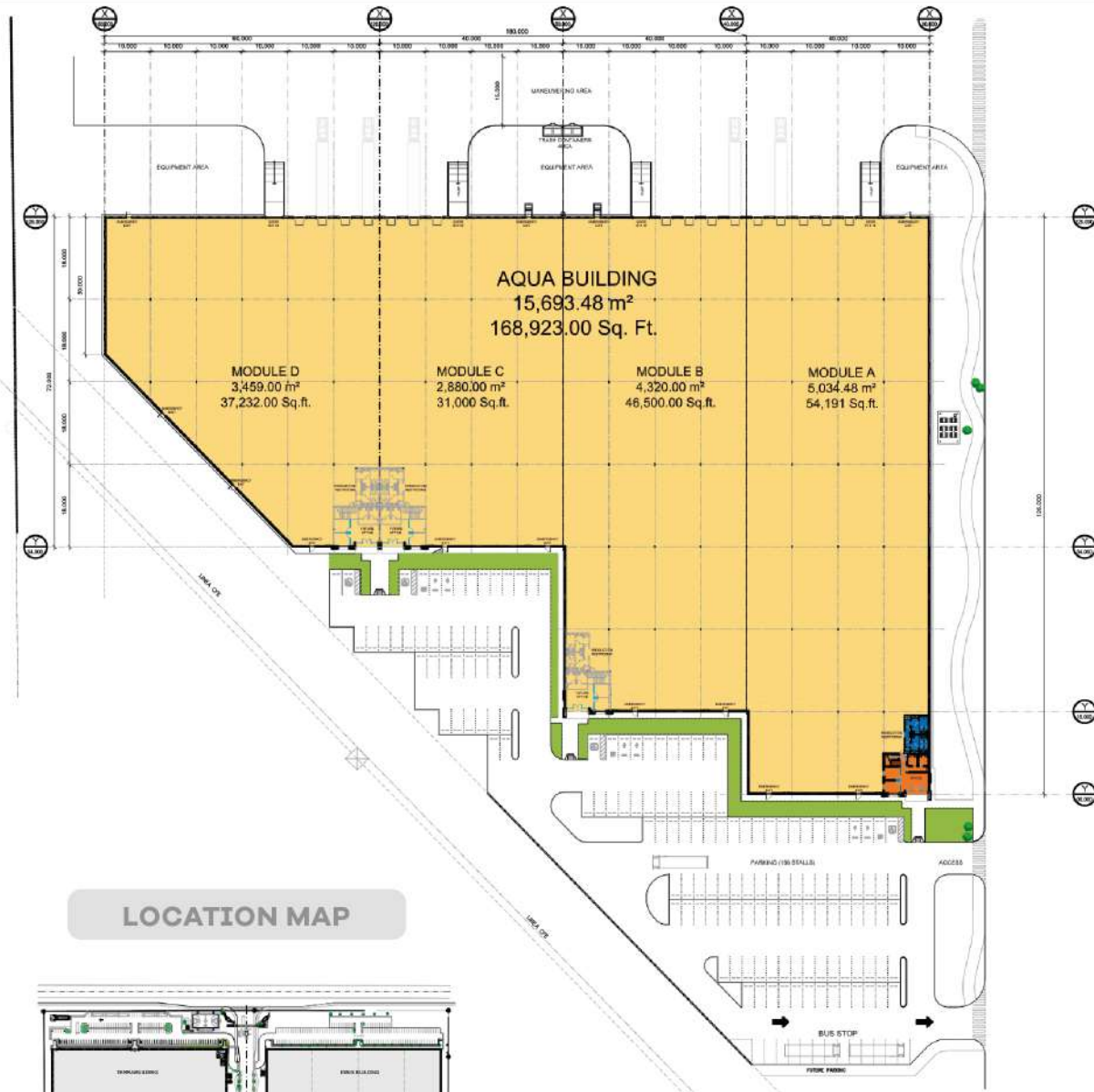
**168,923 sq.ft. (15,693.48 m<sup>2</sup>)**

Office & restrooms	1940 sq. ft.
Bay spacing	10x 18 mts.
Clear height	22 ft (6.7 m)
Construction type	Tilt up
Roof	KR-18 standing seam metal
Roof & walls insulation	R-11 fiberglass
Skylight	4%
Divisible modules	4

Floor slab thickness	5 in Load capacity 8 ton / m <sup>2</sup>
Loading docks	16 Polyutherane Insulated.
Ramps	4 Polyutherane Insulated.
Lighting	LED
Electrical substation	150 KVA
Fire prevention system	Hoses & cabinets
Parking spaces	156



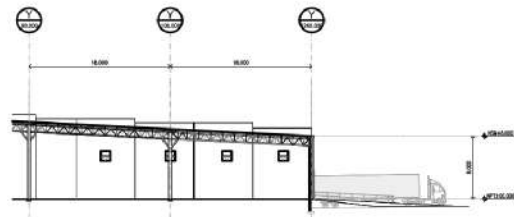
More information:



LOCATION MAP



BUILDING SECTION



PRODUCTION  
**166,983 sq.ft.**

OFFICE & RESTROOMS  
**1,940 sq.ft.**

TOTAL AREA  
**168,923 sq.ft.**

