

Ballena Building

UNDER CONSTRUCTION

4Q 2023



Building Specification

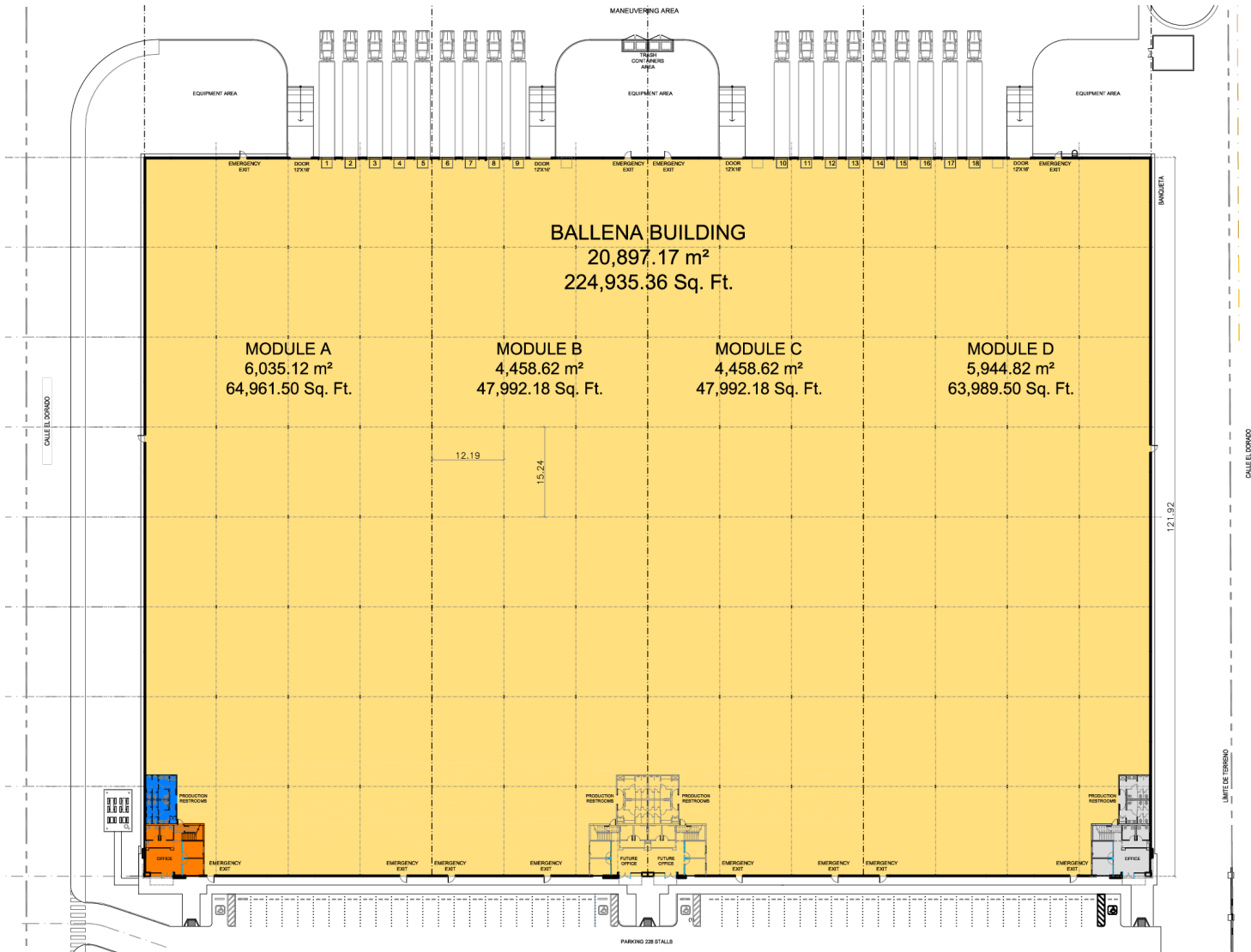
TOTAL AREA

224,935 sq.ft. (20,897 m²)

Office	1,944 sq.ft. / 180 m ²	Floor slab thickness	5 in Load capacity 8 ton / m ²
Production restrooms	Men & Women for 110 people	Loading docks	18 (9 ft x 10 ft) / (2.7m x 3m)
Bay spacing	50 ft x 40 ft / 15 m x 12 m	Ramps	4 (12 ft x 16 ft) / (3.6m x 4.8m)
Clear height	22 ft / 6.7 m	Lighting	LED Light
Max height	29 ft / 8.8 m	Electrical substation	150 KVA
Construction type	7 Inch concrete tilt up	Fire prevention system	Hoses & cabinets
Roof	KR-18 Standing seam metal	Parking spaces	220
Roof & walls insulation	R-19 Fiberglass	Divisible modules	4 Modules
Loading dock equipment	Bollards, dock seals, insulated door and Levelers capacity 35,000 lbs	Skylight	4% on roof and lateral windows for natural light

More information

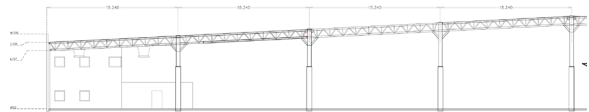




LOCATION MAP



BUILDING SECTION



PRODUCTION
222,991 sq.ft.

OFFICE AREA
1,944 sq.ft.

TOTAL AREA
224,935 sq.ft.



More information

